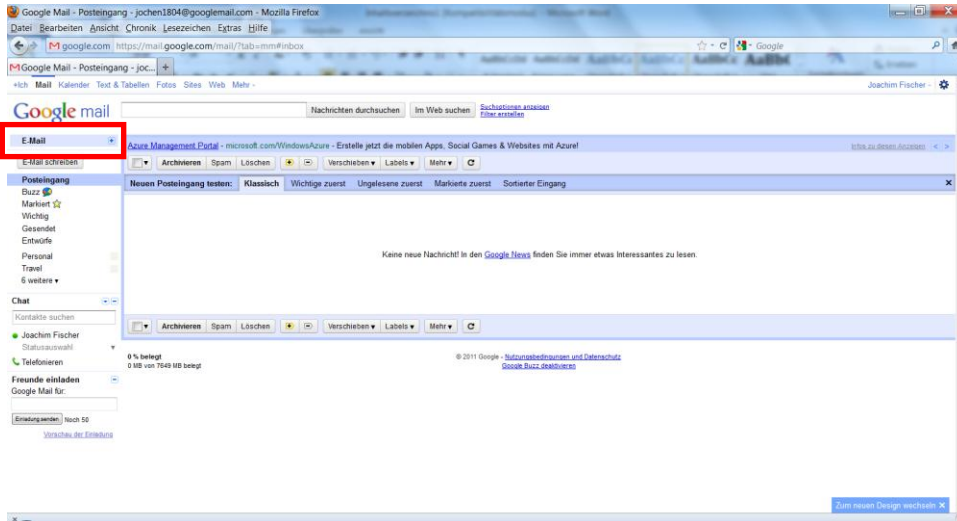


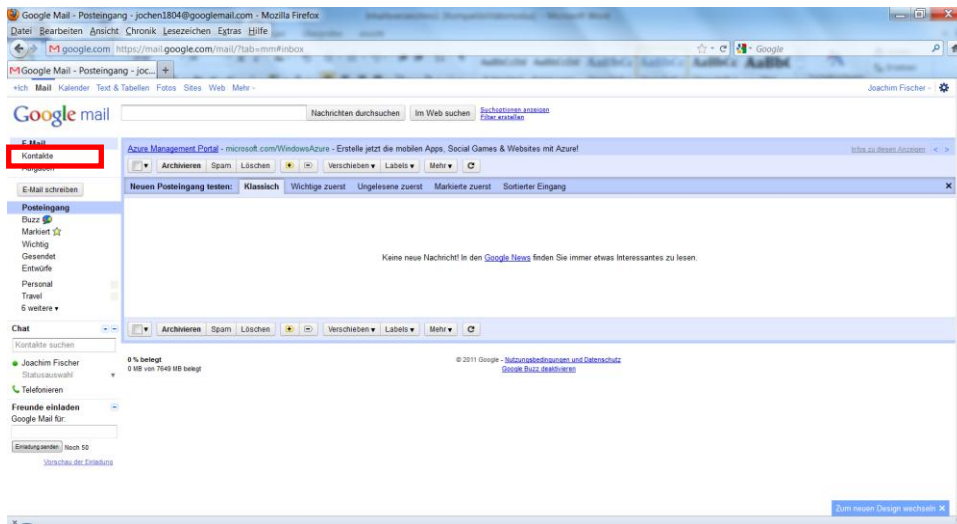
# GoogleMail

## Neue Gruppe anlegen in GoogleMail

### 1. E-Mail anklicken

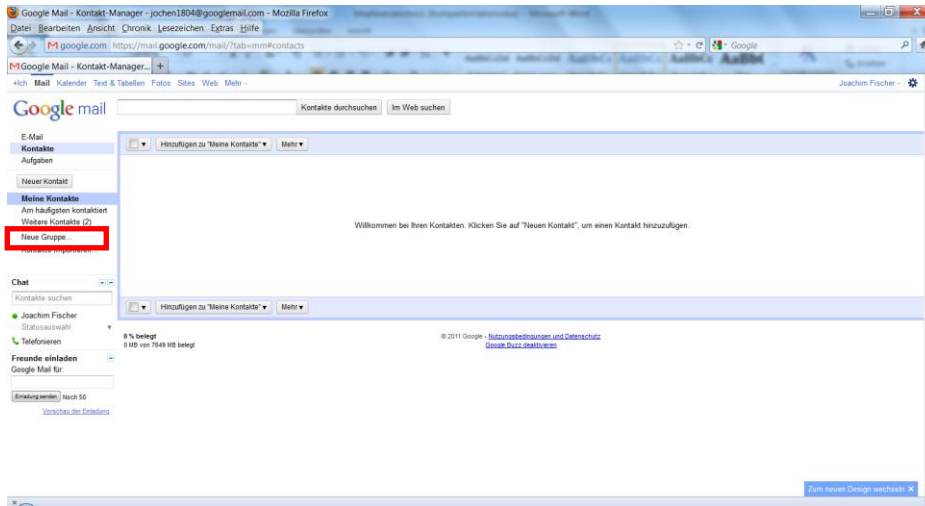


### 2. Kontakte anklicken

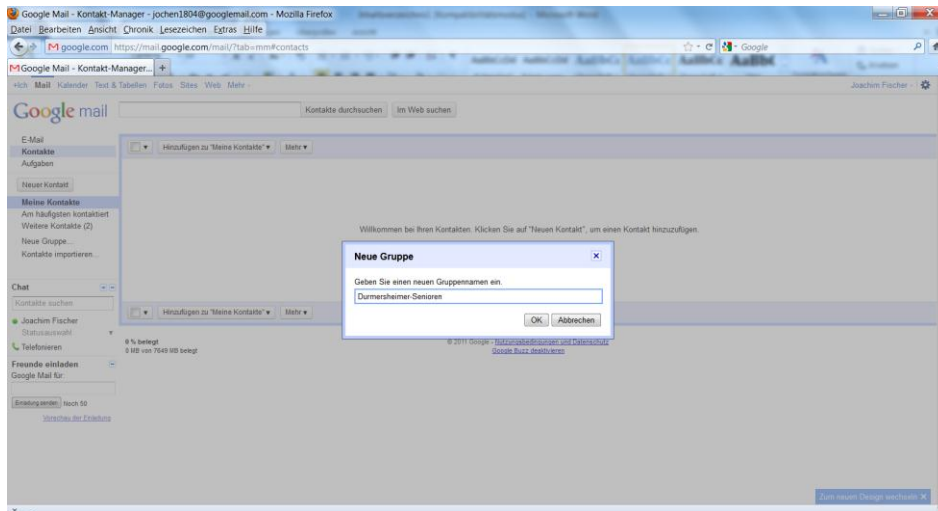


### 3. Neue Gruppe anklicken

# GoogleMail



## 4. Neue Gruppe anklicken



## 5. Name der Gruppe eingeben und OK drücken

## 6. Neue Gruppe wurde angelegt